



Transport
Canada

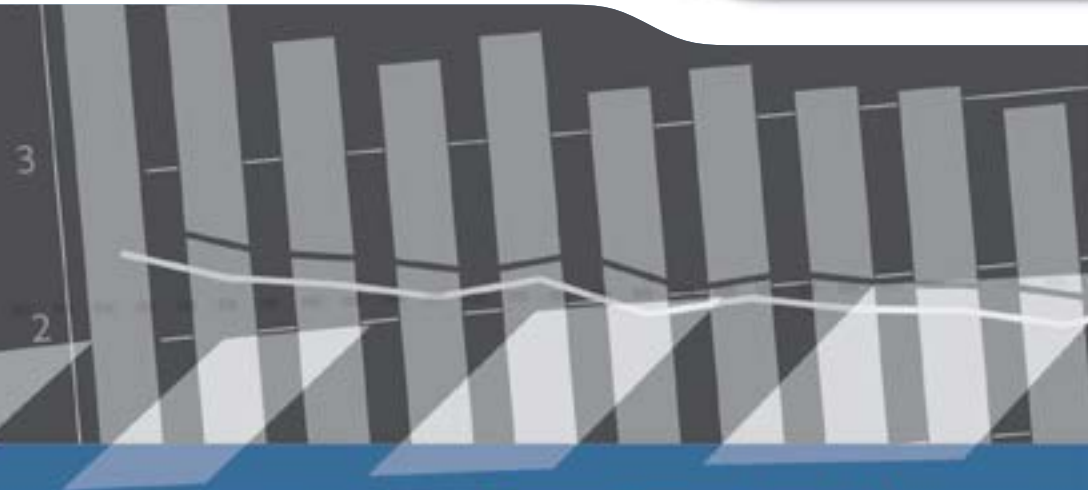
Transports
Canada



Canadian Motor Vehicle Traffic Collision Statistics

2013

Collected in cooperation with the Canadian Council
of Motor Transport Administrators



© Her Majesty the Queen in Right of Canada, represented by the Minister of Transport, 2015.

Cette publication est aussi disponible en français sous le titre Statistiques sur les collisions de la route au Canada 2013.

Catalogue No.: T45-3/2010E-PDF
ISBN: 1701-6223

To request permission to reproduce materials from this publication for commercial purposes, please complete the following web form: www.tc.gc.ca/eng/crown-copyright-request-614.html

Or contact: TCcopyright-droitdauteurTC@tc.gc.ca

To find out more about national road safety programs or initiatives, call Transport Canada toll free at 1-800-333-0371 or e-mail us at mvs-sa@tc.gc.ca. You can also visit our web site at www.tc.gc.ca/motor-vehicle-safety or the Canadian Council of Motor Transport Administrators' web site at www.ccmta.ca.

More detailed motor vehicle collision data can be queried using the National Collision Database (NCDB) On-Line tool located at www.tc.gc.ca/vehicleCollisions.

INTRODUCTION

Transport Canada's National Collision Database (NCDB) contains data on all reportable motor vehicle collisions in Canada that the provinces and territories provide each year.

The federal, provincial and territorial governments in Canada work to improve road safety to reduce the number of fatalities and serious injuries and to have the safest roads in the world.

The year 2013 saw a decrease in the number of fatalities, serious injuries, and total injuries; in fact, 2013 marked the lowest counts for all three of these casualty groups since these data were first collected by Transport Canada in the early 1970's.

- **In 2013, the number of motor vehicle fatalities was 1,923; down 7.4% from 2012 (2,076).**
- **The downward trend for serious injuries continued, dropping to 10,315 in 2013; down 7.2% from 2012 (11,116).**
- **The rate of the number of fatalities per 100,000 population was 5.5 in 2013, down from 6.0 in 2012.**
- **2013 marked the first time that the fatality rate per 10,000 registered vehicles (of 0.83) was below 0.9.**

2013

COLLISIONS AND CASUALTIES 1994-2013

YEAR	COLLISIONS		VICTIMS		
	FATAL ¹	PERSONAL INJURY ²	FATALITIES ³	SERIOUS INJURIES ⁴	INJURIES ⁵ (TOTAL)
1994	2,837	164,635	3,230	21,564	241,899
1995	2,818	162,014	3,313	20,188	238,458
1996	2,740	153,944	3,129	18,734	227,283
1997	2,660	147,549	3,076	17,294	217,401
1998	2,583	145,615	2,919	16,410	213,319
1999	2,632	148,683	2,980	16,187	218,457
2000	2,548	153,290	2,904	15,581	222,848
2001	2,415	149,023	2,758	15,296	216,542
2002	2,583	153,832	2,921	15,894	222,665
2003	2,487	150,493	2,777	15,110	216,123
2004	2,438	145,150	2,735	15,572	206,104
2005	2,551	145,559	2,898	15,792	204,701
2006	2,586	142,517	2,871	16,044 ^r	199,976
2007	2,455	138,615	2,753	14,410 ^r	192,745
2008	2,193 ^r	127,571 ^r	2,431	12,851 ^r	176,394 ^r
2009	2,007 ^r	123,449 ^r	2,216	11,955 ^r	170,770 ^r
2010	2,021 ^r	123,615 ^r	2,238	11,796 ^r	172,081 ^r
2011	1,849 ^r	122,349 ^r	2,023	10,940 ^r	167,740 ^r
2012	1,844 ^r	122,950 ^r	2,076 ^r	11,116 ^r	166,872 ^r
2013	1,741	120,660	1,923	10,315	165,306

1. "Fatal collisions" include all reported motor vehicle crashes that resulted in at least one death, where death occurred within 30 days of the collision, except in Quebec before 2007 (eight days).
2. "Personal injury collisions" include all reported motor vehicle crashes which resulted in at least one injury but not death within 30 days of the collision, except in Quebec before 2007 (eight days).
3. "Fatalities" include all those who died as a result of a reported traffic collision within 30 days of its occurrence, except in Quebec before 2007 (eight days).
4. "Serious Injuries" include persons admitted to hospital for treatment or observation. Serious injuries were estimated from 1994 to 2013 because several jurisdictions under-reported these numbers.
5. "Total Injuries" include all reported severities of injuries ranging from minimal to serious.

r Revised.

FATALITIES AND INJURIES BY AGE GROUP 2013

AGE GROUP (YRS)	FATALITIES	SERIOUS INJURIES	INJURIES (TOTAL)
0-4	25	81	2,196
5-14	45	349	6,729
15-19	170	1,028	15,821
20-24	227	1,312	20,002
25-34	292	1,757	30,644
35-44	237	1,502	25,373
45-54	259	1,577	26,201
55-64	246	1,161	18,216
65 +	402	1,295	16,054
NOT STATED	20	253	4,070
TOTAL	1,923	10,315	165,306

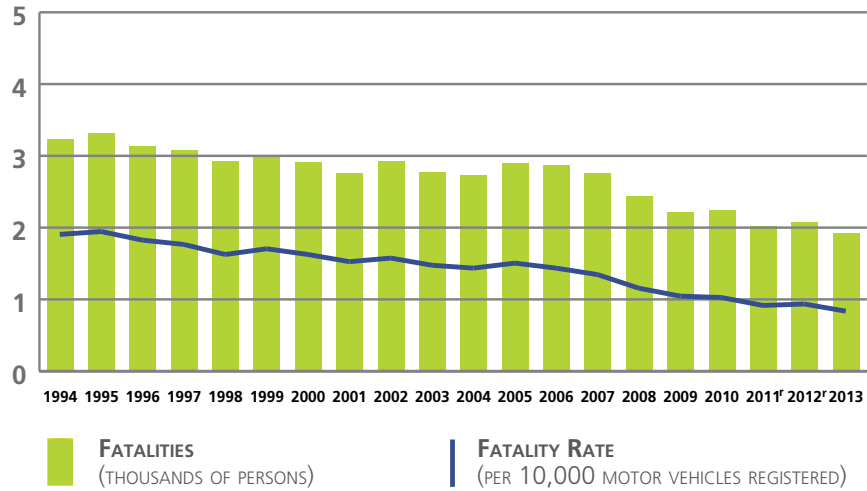
FATALITIES BY ROAD USER CLASS 2009-2013

ROAD USER CLASS	2009	2010	2011	2012	2013
# DRIVERS	1,155	1,131	1,022	1,051 ^r	964
% DRIVERS	52.1	50.5	50.5	50.6	50.1
# PASSENGERS	444	491	401 ^r	438 ^r	348
% PASSENGERS	20.0	21.9	19.8 ^r	21.1 ^r	18.1
# PEDESTRIANS	316	306	321	312	300
% PEDESTRIANS	14.3	13.7	15.9	15.0	15.6
# BICYCLISTS	45	62	57	61	62
% BICYCLISTS	2.0	2.8	2.8	2.9	3.2
# MOTORCYCLISTS*	198	193	173	175	198
% MOTORCYCLISTS	8.9	8.6	8.6	8.4	10.3
# NOT STATED/OTHER	58	55	49 ^r	39 ^r	51
% NOT STATED/OTHER	2.6	2.5	2.4 ^r	1.9	2.7
# TOTAL	2,216	2,238	2,023	2,076 ^r	1,923
% TOTAL	100.0	100.0	100.0	100.0	100.0

* Includes moped riders.

r Revised.

FATALITIES 1994-2013



CASUALTY RATES 2013

	PER 100,000 POPULATION ¹		PER BILLION VEHICLE-KILOMETRES ²		PER 100,000 LICENSED DRIVERS	
	FATALITIES	INJURIES	FATALITIES	INJURIES	FATALITIES	INJURIES
CANADA	5.5	470.2	5.6	481.9	7.7	671.2
NL	5.3	391.1	5.8	426.2	7.7	567.1
PE	9.6	816.5	9.7	826.1	13.3	1,129.9
NS	8.5	447.3	7.6	401.4	11.5	605.9
NB	6.6	376.1	6.3	355.7	9.0	512.8
QC	4.9	462.3	5.6	530.4	7.4	697.7
ON	3.5	440.4	3.7	465.6	5.0	622.1
MB	6.7	881.1	6.4	840.0	9.9	1,302.8
SK	12.6	635.6	10.6	535.7	17.9	903.5
AB	8.9	465.4	6.4	335.5	12.1	628.3
BC	5.9	445.6	7.5	567.2	8.3	627.5
YT	11.0	563.7	6.4	329.6	14.4	736.3
NT	6.8	271.4	7.9	314.0	12.4	492.0
NU	8.5	112.9	85.7	1,142.9	57.3	763.7

1. Statistics Canada, Annual Demographic Estimates: Canada, Provinces and Territories, 2014, Catalogue No. 91-215-X.
2. Statistics Canada, 'Canadian Vehicle Survey', Catalogue No. 53-223-XIE.

Notes: Vehicle kilometres travelled data were not available for 2013 so they were estimated using average yearly change for the years 2010-2012

Data for Ontario are preliminary for 2013. Data for Newfoundland and New Brunswick were estimated.

Recent changes in how traffic accident reports are collected in Manitoba resulted in an increased number of injuries of a minimal nature being captured in 2013.

PERCENTAGE OF DRIVER AND PASSENGER FATALITIES AND SERIOUS INJURIES BY AGE GROUP 2013

AGE GROUP (YRS)	FATALITIES		SERIOUS INJURIES	
	DRIVERS	PASSENGERS	DRIVERS	PASSENGERS
0-4	0.0	4.5	0.0	2.0
5-14	0.2	5.6	0.1	7.2
15-19	8.0	15.2	7.5	16.1
20-24	13.1	14.4	12.8	15.2
25-34	17.3	11.8	18.9	14.7
35-44	13.4	9.6	17.5	9.3
45-54	15.3	7.0	17.7	11.0
55-64	12.9	10.4	12.6	8.3
65 +	19.6	19.2	12.7	11.7
NOT STATED	0.2	2.3	0.2	4.5
TOTAL	100.0	100.0	100.0	100.0

NUMBER OF LICENSED DRIVERS BY GENDER AND BY AGE 2013

AGE GROUP (YRS)	MALES	FEMALES	TOTAL
<16	24,659	19,568	44,227
16-19	609,567	557,748	1,167,315
20-24	1,007,662	937,323	1,944,985
25-34	2,142,130	2,070,434	4,212,564
35-44	2,178,038	2,115,199	4,293,237
45-54	2,484,619	2,366,327	4,850,946
55-64	2,148,799	2,020,100	4,168,899
65 +	2,103,656	1,843,804	3,947,460
NOT STATED	0	0	0
TOTAL	12,699,130	11,930,503	24,629,633

LICENSED DRIVERS AND MOTOR VEHICLE REGISTRATIONS BY TYPE OF VEHICLE (IN THOUSANDS) 1994-2013

	LICENSED DRIVERS ¹	LIGHT-DUTY VEHICLES ²	COMMERCIAL VEHICLES ³	MOTOR-CYCLES ⁴
1994	19,243	13,131	3,510	330
1995	19,327	13,192	3,535	320
1996	19,964	13,251	3,620	312
1997	20,148	13,515	3,684	319
1998	20,744	13,887	3,767	334
1999	20,934	16,538	722	274
2000	20,593	16,832	739	311
2001	20,879	17,055	729	318
2002	21,163	17,543	724	350
2003	21,436	17,755	740	373
2004	21,673	17,920	752	409
2005	21,937	18,124	786	443
2006	22,278	18,739	841	485
2007	22,606	19,199	872	522
2008	22,972	19,613	907	567
2009	23,198	19,877	915	595
2010	23,541	20,268	964	616
2011	23,831	20,608	1,008	631
2012	24,147	20,652	1,053	661
2013	24,630	21,262	1,072	672

1. Excludes temporary permits prior to 1999.
2. Pre-1999, these registrations include passenger automobiles. From 1999, light-duty vehicles include passenger type vehicles (automobiles, passenger vans), light trucks and vans (less than 4 500 kg).
3. Pre-1999, these registrations include trucks, buses and other commercial vehicles, such as vans. From 1999, these registrations include commercial vehicles (trucks and buses) greater than 4 500 kg.
4. Includes mopeds.

Source: 1994 to 1998: Statistics Canada, Catalogue No. 53-219, "Road Motor Vehicles - Registrations".
From 1999, the motor vehicle registration data are from Statistics Canada, CANSIM, Table 405-0004.
From 1999 the licensed driver data were provided by each jurisdiction.

Notes: A reduced level of police reporting in British Columbia in years 1996 through 2004 has affected the British Columbia totals and, to a lesser extent, national totals reported in this publication.



PERCENTAGE OF DRIVER AND PASSENGER FATALITIES AND SERIOUS INJURIES WHERE VICTIMS WERE NOT USING SEAT BELTS 2009-2013

	2009	2010	2011	2012	2013
DRIVERS					
FATALITIES	33.6	34.0	31.4	31.8	32.0
SERIOUS INJURIES	14.5	12.9	12.9	12.6	11.7
PASSENGERS					
FATALITIES	36.3	40.4	34.1	36.6	30.7
SERIOUS INJURIES	23.3	20.5	20.9	20.0	18.5

Note: "Serious Injuries" include victims admitted to hospital for treatment or observation.

PERCENTAGE OF FATALITIES AND SERIOUS INJURIES BY ROAD USER CLASS 2013

ROAD USER CLASS	FATALITIES	SERIOUS INJURIES
DRIVERS	50.1	46.2
PASSENGERS	18.1	20.7
PEDESTRIANS	15.6	14.5
BICYCLISTS	3.2	4.6
MOTORCYCLISTS*	10.3	11.6
NOT STATED/OTHER	2.7	2.4
TOTAL	100.0	100.0

* Includes moped riders.

NUMBER OF COLLISIONS BY LOCATION 2013

LOCATION	FATAL	PERSONAL INJURY
URBAN ¹	742	90,015
RURAL ²	976	28,767
NOT STATED	23	1,878
TOTAL	1,741	120,660

1. Urban includes: (a) metropolitan roads and streets and other urban areas, or (b) a speed limit at the collision site of 60 km/h or less.
2. Rural includes: (a) primary or secondary highways, as well as local roads, or (b) a speed limit at the collision site exceeding 60 km/h.

Note: In Alberta, New Brunswick, Manitoba, and Saskatchewan, "urban" includes any area within the corporate boundaries of a city, town, village or hamlet. "Rural" includes any area outside of what is defined as "urban".